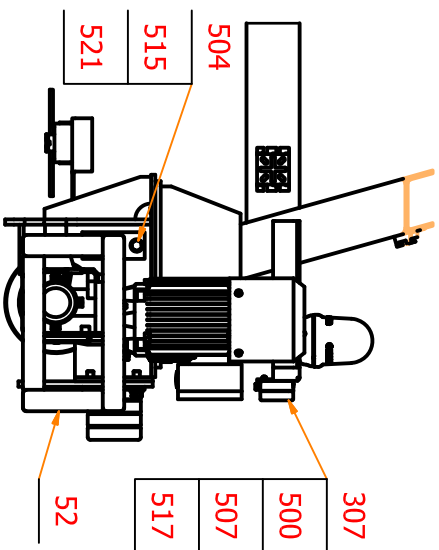
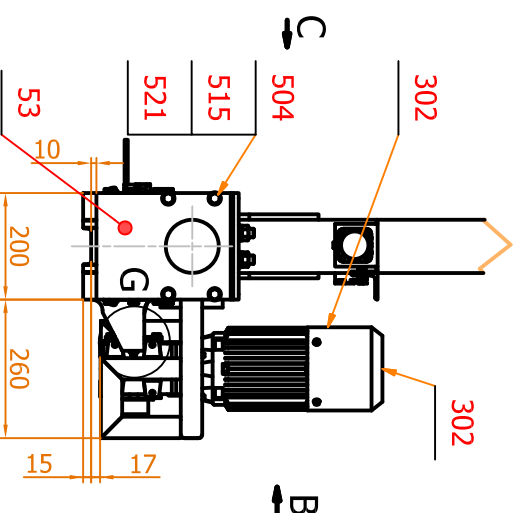


Max static wheel load 9,9 kN

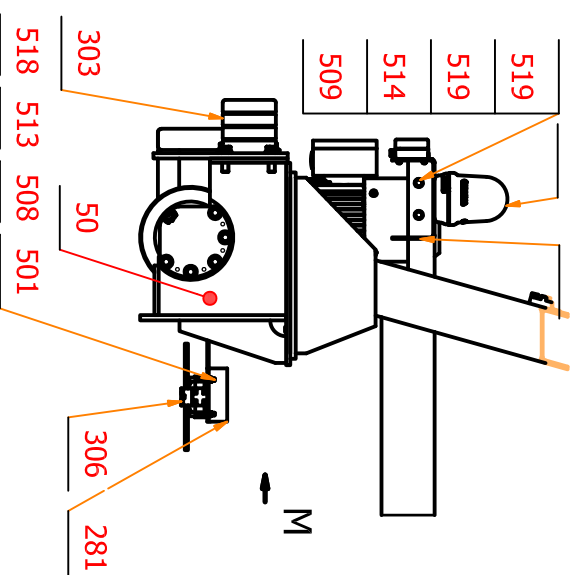
B (1 : 10)



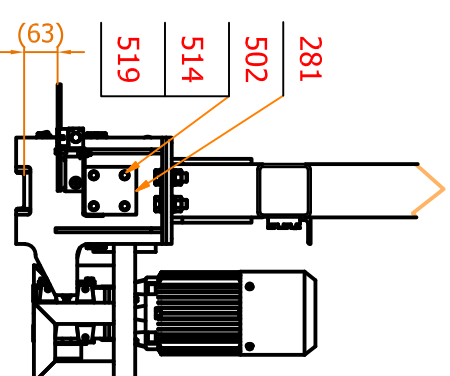
A (1 : 10)



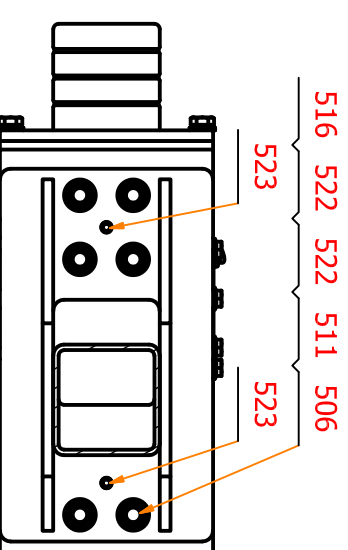
C (1 : 10)



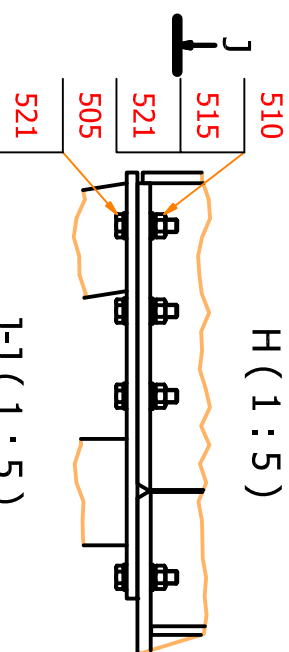
M (1 : 10)



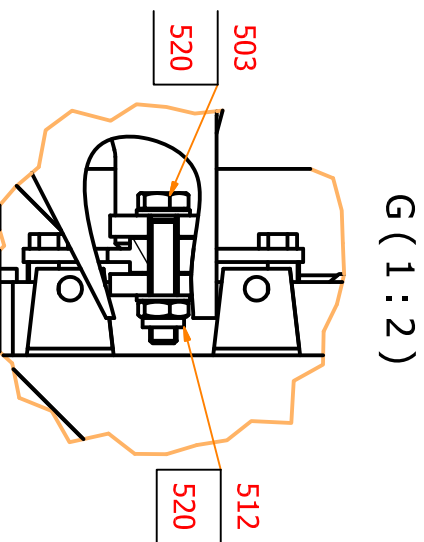
F-F (1 : 5)



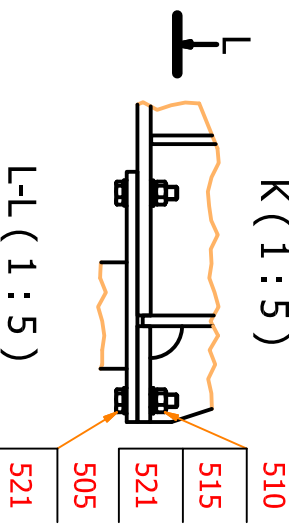
H (1 : 5)



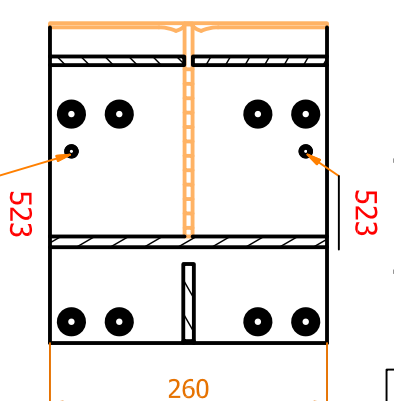
G (1 : 2)



K (1 : 5)



L-L (1 : 5)



Runway tolerances must comply with standard ISO12488-1 tolerance class 2

TECHNICAL DATA:	
Load	1000 kg;
Span	12,0 m;
Lifting height	2,73 m;
Hoisting speed	1,3/8,0 m/min;
Traversing speed	5,0/20,0 m/min;
Travelling speed	10,0/40,0m/min;
Main/Control voltage	380/48 V; 50 Hz
Crane duty group	A5;
Hoist duty group	M6;
Crane travelling duty group	M5;
Temperature	-5...+40°C; indoor use
Supply power	2,54 kW;

TABLE