

Condition report Boomer

Customer: Strabag		Issue date: 2021-09-02	
Worksite: Kista		Issuer: Roger Rausell	
Serial number: 8999 3322 00		Type of machine: XE3C-40	
Diesel engine hours: 1097			
Electric motor h. boom 1: 4378	Electric motor boom 2: 4418	Electric motor boom 3: 4362	
Percussion h. boom 1: 1375	Percussion h. boom 2 1110	Percussion h. boom 3: 1457	

Part A / Rockdrill 1 (Left)

Rockdrill 4038
COP: _____

Serial
number _____

AVO18D396C

Percussion 0
hours _____

A	Control point	OK		Fixed		COMMENTS
		YES	NO	YES	NO	
1	Frontpart / Guide Wear	X				
2	Gear Grease (NA Cop3038/4038)					
3	Sidebolts Torque	X				
4	Bolts Torque	X				
5	Rotation motor Functions/wear	X				
6	Ackumulators Correct pressure	X				
7	Hoses and connections Damage / Leakage	X				
8	Flushhead Leakage / Connection	X				

Comments:

Newly overhauled rock drill.

Epiroc Sweden AB

Epiroc Sweden AB
105 23 Stockholm
Sweden

Besöksadress:
Sjöbodavägen 9
Norsborg, Sweden

Kundservice: 020-78 44 55
www.epiroc.com/se
Certifierad enl. SS-EN ISO 9001

Organisationsnummer:
SE 556 100-1453
Säte: Nacka, Sweden

Part A / Rockdrill 2 (Middle)

Rockdrill 4038
COP: _____

Serial
number _____

AVO18D827C

Percussion 0
hours _____

A	Control point	OK		Fixed		COMMENTS
		YES	NO	YES	NO	
1	Frontpart / Guide Wear	X				
2	Gear Grease (NA Cop3038/4038)					
3	Sidebolts Torque	X				
4	Bolts Torque	X				
5	Rotation motor Functions/wear	X				
6	Ackumulators Check pressure	X				
7	Hoses and connections Damage / Leakage	X				
8	Flush head Leakage / Connection	X				

Comments:

Newly overhauled rock drill.

Epiroc Sweden AB

Epiroc Sweden AB
105 23 Stockholm
Sweden

Besöksadress:
Sjöbodavägen 9
Norsborg, Sweden

Kundservice: 020-78 44 55
www.epiroc.com/se
Certifierad enl. SS-EN ISO 9001

Organisationsnummer:
SE 556 100-1453
Säte: Nacka, Sweden

Part A / Rockdrill 3 (Right)

Rockdrill 4038
COP: _____

Serial
number _____

AVO18D826C

Percussion 126
hours _____

A	Control point	OK		Fixed		COMMENTS
		YES	NO	YES	NO	
1	Frontpart / Guide Wear	X				
2	Gear Grease (NA Cop3038/4038)					
3	Sidebolts Torque	X				
4	Bolts Torque	X				
5	Rotation motor Functions/wear	X				
6	Ackumulators Check pressure	X				
7	Hoses and connections Damage / Leakage	X				
8	Flushhead Leakage / Connection	X				

Comments:

The rock drill has 126 hours since last overhaul.

Epiroc Sweden AB

Epiroc Sweden AB
105 23 Stockholm
Sweden

Besöksadress:
Sjöbodavägen 9
Norsborg, Sweden

Kundservice: 020-78 44 55
www.epiroc.com/se
Certifierad enl. SS-EN ISO 9001

Organisationsnummer:
SE 556 100-1453
Säte: Nacka, Sweden

Part A / Rockdrill 4 (Spare)

Rockdrill 4038
COP: _____

Serial
number _____

AVO18D654C

Percussion 0
hours _____

A	Control point	OK		Fixed		COMMENTS
		YES	NO	YES	NO	
1	Frontpart / Guide Wear	X				
2	Gear Grease (NA Cop3038/4038)					
3	Sidebolts Torque	X				
4	Bolts Torque	X				
5	Rotation motor Functions/wear	X				
6	Ackumulators Check pressure	X				
7	Hoses and connections Damage / Leakage	X				
8	Flushhead Leakage / Connection	X				

Comments:

Newly overhauled rock drill.

Epiroc Sweden AB

Epiroc Sweden AB
105 23 Stockholm
Sweden

Besöksadress:
Sjöbodavägen 9
Norsborg, Sweden

Kundservice: 020-78 44 55
www.epiroc.com/se
Certifierad enl. SS-EN ISO 9001

Organisationsnummer:
SE 556 100-1453
Säte: Nacka, Sweden

Part B / Feed 1 (Left)

B	Control point	OK		Fixed		COMMENTS
		YES	NO	YES	NO	
1	Feed beam Damage / Wear	X				
2	Sliding pieces Damags / Adjustments	X				
3	Slide bars Damage / Wear	X				
4	Pulley wheel / Bearing Damage / Wear	X				
5	Pull and return rope Damags/Wear/Adjust.	X				
6	Hose drum Damage / Bearing	X				
7	Cradle Damage/Wear/adjust.	X				
8	Feed cylinder Damage / Leakage	X				
9	Hoses and connections Damage/Leakage/Length	X				
10	Bolts Missing/Torque	X				
11	Drill steel support / BSH Function / Wear	X				
12	Covers / Wearplates Damage / Wear	X				
13	Length sensor Function	X				

Comments:

A lot of new parts. Sliding bars, sliding pieces, pull and return ropes, hose drum, hoses etc.

Newly overhauled BSH.

Part B / Feed 2 (Middle)

B	Control point	OK		Fixed		COMMENTS
		YES	NO	YES	NO	
1	Feed beam Damage / Wear	X				
2	Sliding pieces Damage / Adjustments	X				
3	Slide bars Damage / Wear	X				
4	Pulley wheel / Bearing Damage / Wear	X				
5	Pull and return rope Damage/Wear/Adjust.	X				
6	Hose drum Damage / Bearing	X				
7	Cradle Damage/Wear/adjust.	X				
8	Feed cylinder Damage / Leakage	X				
9	Hoses and connections Damage/Leakage/Length	X				
10	Bolts Missing/Torque	X				
11	Drill steel support / BSH Function / Wear	X				
12	Covers / Wearplates Damage / Wear	X				
13	Length sensor Function	X				

Comments:

A lot of new parts. Sliding bars, sliding pieces, pull and return ropes, hose drum, hoses etc.

Newly overhauled BSH.

Part B / Feed 3 (Right)

B	Control point	OK		Fixed		COMMENTS
		YES	NO	YES	NO	
1	Feed beam Damage / Wear	X				
2	Sliding pieces Damage / Adjustments	X				
3	Slide bars Damage / Wear	X				
4	Pulley wheel / Bearing Damage / Wear	X				
5	Pull and return rope Damage/Wear/Adjust.	X				
6	Hose drum Damage / Bearing	X				
7	Cradle Damage/Wear/adjust.	X				
8	Feed cylinder Damage / Leakage	X				
9	Hoses and connections Damage/Leakage/Length	X				
10	Bolts Missing/Torque	X				
11	Drill steel support / BSH Function / Wear	X				
12	Covers / Wear plates Damage / Wear	X				
13	Length sensor Function	X				

Comments:

A lot of new parts. Sliding bars, sliding pieces, pull and return ropes, hose drum, hoses etc.

Newly overhauled BSH.

Part C / RHS Feed 1 (Left)

C	Control point	OK		Fixed		COMMENTS
		YES	NO	YES	NO	
1	Bushings BSH Wear	X				
2	Bushings RHS Wear	X				
3	Carousel Function / Dividing disks	X				
4	Arms/Jaws Function / Wear	X				
5	Sensors Function / Cables	X				
6	Turning devices Leakage / Function	X				
7	Hydraulics Leakage / function	X				
8	Bushings / Shafts Wear	X				

Comments:

Part C / RHS Feed 2 (Middle)

C	Control point	YES	NO	YES	NO	COMMENTS
1	Bushings BSH Wear	X				
2	Bushings RHS Wear	X				
3	Carousel Function / Dividing disks	X				
4	Arms/Jaws Function / Wear	X				
5	Sensors Function / Cables	X				
6	Turning devices Leakage / Function	X				
7	Hydraulics Leakage / function	X				
8	Bushings / Shafts Wear	X				

Comments:

Part C / RHS Feed 3 (Right)

C	Control point	YES	NO	YES	NO	COMMENTS
1	Bushings BSH Wear	X				
2	Bushings RHS Wear	X				
3	Carousel Function / Dividing disks	X				
4	Arms/Jaws Function / Wear	X				
5	Sensors Function / Cables	X				
6	Turning devices Leakage / Function	X				
7	Hydraulics Leakage / function	X				
8	Bushings / Shafts Wear	X				

Comments:

Part D / Boom 1 (Left)

D	Control point	OK		Fixed		COMMENTS
		YES	NO	YES	NO	
1	Boom body Damage	X				
2	Covers Damage	X				
3	Bolts Damage / Torque / Missing	X				
4	Extension Damage / Adjustments	X				
5	Links/Shafts Damage / Adjustmenst	X				
6	Hydraulic cylinders Damage / Leakage	X				
7	Rotation units Damage/Leakage/ unction	X				
8	Valveblocks/Hydraulics Leakage / Function	X				
9	Hoses and connections Damage / Leakage	X				
10	Central lubrication Damage/ Function	X				
11	Check valves Function	X				
12	Sensors and cables Function / Damage	X				

Comments:

Part D / Boom 2 (Middle)

D	Control point	OK		Fixed		COMMENTS
		YES	NO	YES	NO	
1	Boom body Damage	X				
2	Covers Damage	X				
3	Bolts Damage / Torque / Missing	X				
4	Extension Damage / Adjustments	X				
5	Links/Shafts Damage / Adjustmenst	X				
6	Hydraulic cylinders Damage / Leakage	X				
7	Rotation units Damage/Leakage/ unction	X				
8	Valveblocks/Hydraulics Leakage / Function	X				
9	Hoses and connections Damage / Leakage	X				
10	Central lubrication Damage/ Function	X				
11	Check valves Function	X				
12	Sensors and cables Function / Damage	X				

Comments:

Part D / Boom 3 (Right)

D	Control point	OK		Fixed		COMMENTS
		YES	NO	YES	NO	
1	Boom body Damage	X				
2	Covers Damage	X				
3	Bolts Damage / Torque / Missing	X				
4	Extension Damage / Adjustments	X				
5	Links/Shfts Damage / Adjustmenst	X				
6	Hydraulic cylinders Damage / Leakage	X				
7	Rotation units Damage/Leakage/ unction	X				
8	Valveblocks/Hydraulics Leakage / Function	X				
9	Hoses and connections Damage / Leakage	X				
10	Central lubrication Damage/ Function	X				
11	Check valves Function	X				
12	Sensors and cables Function / Damage	X				

Comments:

Part E / Carrier

E	Control Point	OK		Fixed		COMMENTS
		YES	NO	YES	NO	
1	Rims and tires Damage / Pressure	X				
2	Brakes Test of function	X				
3	Transmission Function/ Leakage	X				
4	Brake accumulators Function	X				
5	Diesel engine, oil level / Filters Oil level / Condition	X				
6	Watersystem engine Level / Leakage	X				
7	Compressor Oil level / Air filter	X				
8	Air tank Drained / Condition	X				
9	Electrical system Cables / Sensors	X				
10	Lightning Damage / Function		X			Stair lights out of order.
11	ECL lubrication Function / Leakage	X				
12	Watersystem drilling Leakage / Function	X				
13	Boom bracket Damage	X				Hose clamp for percussion hoses missing for bom1
14	Jacks Function / Leakage	X				
15	Hydraulic oil tank Oil condition	X				
16	Hoses and connections Leakage / Wear	X				
17	Emergency stops Function / Damage	X				
18	Fire supr system Condition / Inspection	X				Condition OK, Needs to be inspected.

Comments:

Part F / Cabin

F	Control point	OK		Fixed		COMMENTS
		YES	NO	YES	NO	
1	Windshield / Side windows Damage		X			Front window cracked
2	Air conditioner Functions	X				
3	Seat Damage / Wear		X			Wear on seats
4	Attachments / Dampers Damage / Wear	X				
5	Emergency stops Function	X				
6	Lightning Function	X				
7	Drivers panel / Lights Function		X			Alternator charging light broken.

Comments:

Handheld light in cabin missing.

Part G / RCS

G	Control point	OK		Fixed		COMMENTS
		YES	NO	YES	NO	
1	RCS Modules Condition / Function		X			Application module D300 out of function.
2	RCS Cables Condition / Function	X				
3	Pressure sensors Calibration / Functions	X				
4	Boom sensors Calibration / Functions	X				
5	Boom deflection Control	X				
6	RCS joystick Function / Wear	X				

Comments:

Both displays has small cracks in the glass, function is OK.

Part I / Service platform

Serial number: P3-MCS-14,7M

I	Control point	OK		Fixed		COMMENTS
		YES	NO	YES	NO	
1	Hydraulic system Function / movement	X				
2	Hydraulic cylinders Damage / Leakage	X				
3	Overall condition Damage / Wear / Function	X				
4	Levers Function	X				
5	Hoses and connections Damage / Leakage	X				
6	Warning signs / Labels Damage / Visibility	X				
7	Inspection Performed		X			Needs to be inspected

Comments:





Epiroc Sweden AB

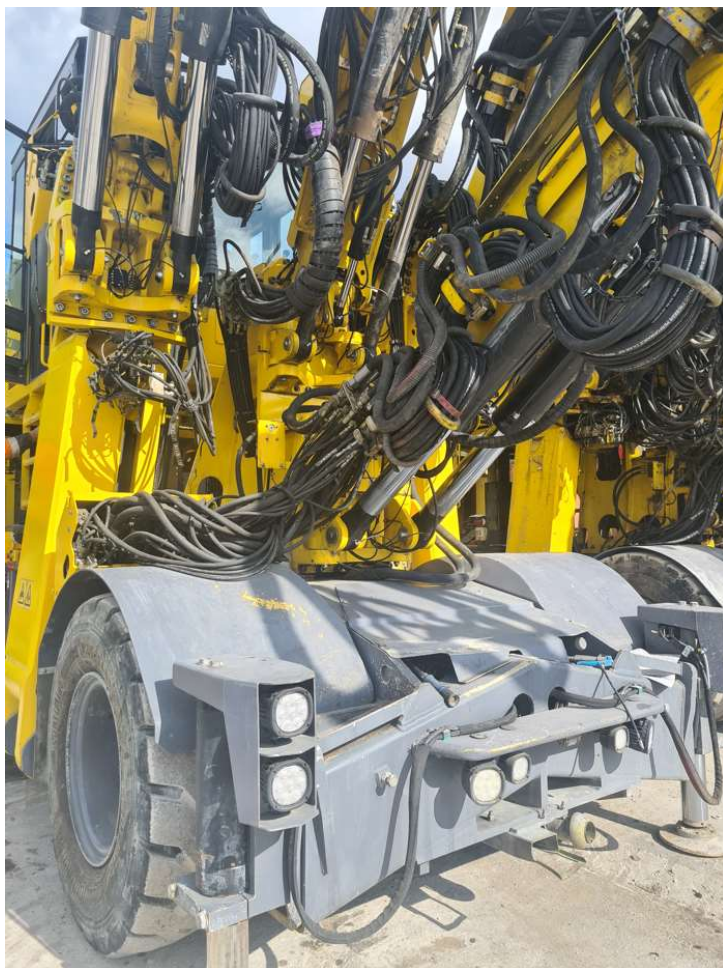
Epiroc Sweden AB
105 23 Stockholm
Sweden

Besöksadress:
Sjöbodavägen 9
Norsborg, Sweden

Kundservice: 020-78 44 55
www.epiroc.com/se
Certifierad enl. SS-EN ISO 9001

Organisationsnummer:
SE 556 100-1453
Säte: Nacka, Sweden







**Epiroc Sweden AB**

Epiroc Sweden AB
105 23 Stockholm
Sweden

Besöksadress:
Sjöbodavägen 9
Norsborg, Sweden

Kundservice: 020-78 44 55
www.epiroc.com/se
Certifierad enl. SS-EN ISO 9001

Organisationsnummer:
SE 556 100-1453
Säte: Nacka, Sweden