

# KOMATSU®

## PC60-7B

FLYWHEEL HORSEPOWER  
40.5 kW 54 HP @ 2100 rpm

OPERATING WEIGHT  
6860 kg 15,124 lb



Photo may include optional equipment



**PC**  
**60-7B**

## COMPACT EXCAVATOR

UTILITY



# PC60-7B Compact Excavator

## Easy Maintenance

To make it easy to keep them up and running when you need them, Komatsu compact excavators are equipped with a variety of easy maintenance features.

## Exclusive HydrauMind System

HydrauMind™ is an advanced hydraulic control system that provides the operator with unbeatable “feel” and precision control. By automatically providing just the right combination of speed and power, even the most complex operations can be tackled with maximum speed and efficiency. It's one of the features that has helped make our full-size excavators so popular around the world. And that makes our compact machines work bigger than they look.

## LCD Monitor

Displays oil pressure, battery condition and fuel level at a glance, as well as various alarm and diagnostic functions.

## Built-in Hydraulics

Built-in hoses serving the bucket, boom and blade cylinders ensure protection from chafing.

## Fixed Boom

Offers maximum digging forces in a compact machine allowing for large excavator performance.

## Easy-to-use PPC Joysticks

Another advanced feature is the Proportional Pressure Control (PPC) joysticks. Easy to use PPC controls help operators of all skill levels work precisely and efficiently all day long — with minimum operator effort.

## Steel or Rubber Tracks

Choose between quiet, smooth-rolling rubber tracks or durable, easy to replace steel tracks.





ENGINE-EPA CERTIFIED

Make .....	Komatsu 4D95LE-2
Type .....	4-cycle, water-cooled, direct-injection
Number of cylinders .....	4
Rated power:	
SAEJ1349 .....	40.5 kW <b>54 HP</b> @ 2100 rpm
Displacement .....	3.28 ltr. <b>200 cu. in.</b>



## HYDRAULIC SYSTEM

Type ..... HydrauMind™ – Closed Load Sensing  
System with pressure compensated valves

Main pumps:

Type .....	Variable-displacement axial piston pump
Maximum flow .....	155 ltr <b>41.0 gpm</b>
Auxiliary Hydraulic Flow .....	120 ltr/min <b>31.8 gpm</b>

Valve rating:

Swing	195 kg/cm²	2,774 psi
Digging equipment	250 kg/cm²	3,559 psi
Bucket breakout force (ISO)	4800 kg	10,582 lb
Digging arm breakout force		
1650 mm 5'5"	3050 kg	6,724 lb



## ELECTRIC SYSTEM

Operating voltage	24V
Battery	12V, 2 x 70 Ah
Alternator	25A
Starter	4.5 kW



## SWING SYSTEM

Driven by . . . . . Hydrostatic motor  
Swing speed . . . . . 12.0 rpm



## TRANSMISSION AND BRAKES

Controls .....	Two levers
Operation .....	Hydrostatic
Hydraulic motors .....	Axial piston motor, in-shoe design
Maximum traction force .....	5500 kg 12,125 lb
Maximum speed: High .....	4.5 km/h 2.8 mph
Low .....	2.8 km/h 1.7 mph
Parking brakes .....	Oil disc brake



## UNDERCARRIAGE

Adjustment of the track tension. . . . .	Grease
Number of shoes (for each side) . . . . .	38
Number of carrier rollers (for each side) . . . . .	1
Number of track rollers (for each side) . . . . .	5



## BLADE

Width x height . . . . .	2260 mm x 470 mm 7'5" x 1'6"
Maximum lifting above ground level . . . . .	410 mm 1'4"
Maximum depth below ground level . . . . .	270 mm 10"



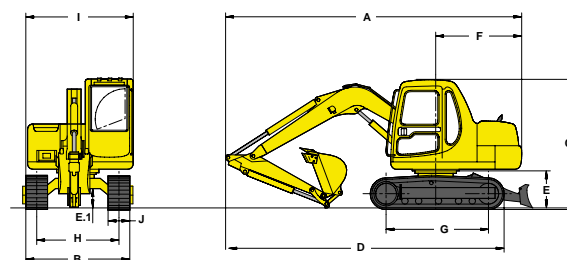
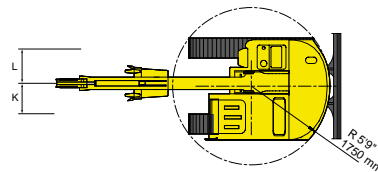
## OPERATIONAL WEIGHT

Operational mass, including 1650 mm 5'5" arm, bucket with 0.28 m<sup>3</sup> 0.36 yd<sup>3</sup> ISO 754 capacity, blade, operator weight, liquids, full fuel tank, and standard equipment (ISO 6016):

PC60-7B	Shoe Width	Operational Weight Monoboom
With Blade	600 mm <b>24"</b>	6860 kg <b>15,124 lb</b>
Without Blade	600 mm <b>24"</b>	6360 kg <b>14,021 lb</b>

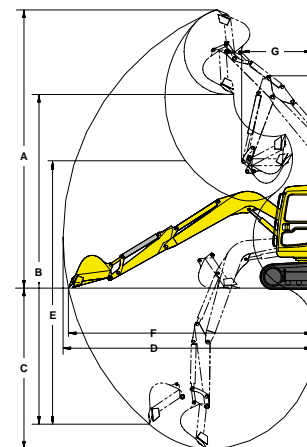
### Dimensions (standard configuration)

A.	Overall Length . . . . .	6080 mm	<b>19'11"</b>
B.	Overall Width . . . . .	2250 mm	<b>7'5"</b>
C.	Overall Height . . . . .	2590 mm	<b>8'6"</b>
D.	Length on Ground (transport) . . . . .	6080 mm	<b>19'11"</b>
E.	Ground Clearance, counterweight . . . . .	750 mm	<b>2'5"</b>
E.1.	Ground Clearance, undercarriage. . . . .	350 mm	<b>1'1"</b>
F.	Tail Swing Radius. . . . .	1750 mm	<b>5'9"</b>
G.	Length of Track on Ground. . . . .	2130 mm	<b>7'0"</b>
H.	Track Gauge . . . . .	1700 mm	<b>5'7"</b>
I.	Upperstructure Width . . . . .	2250 mm	<b>7'5"</b>
J.	Shoe Width . . . . .	600 mm	<b>24"</b>



### Working Range (standard configuration)

	Arm Length	1650 mm	<b>5'5"</b>	2250 mm	<b>7'4"</b>
A.	Max. Digging Height	7150 mm	<b>23'5"</b>	7515 mm	<b>24'7"</b>
B.	Max. Dumping Height	5015 mm	<b>16'5"</b>	5420 mm	<b>17'9"</b>
C.	Max. Digging Depth	4100 mm	<b>13'5"</b>	4690 mm	<b>15'4"</b>
D.	Max. Digging Reach	6360 mm	<b>20'10"</b>	6900 mm	<b>22'7"</b>
E.	Max. Vertical Wall Digging Depth	3505 mm	<b>11'6"</b>	3265 mm	<b>10'8"</b>
F.	Max. Digging Reach at Ground	6220 mm	<b>20'5"</b>	6770 mm	<b>22'2"</b>
G.	Min. Swing Radius	1750 mm	<b>5'9"</b>	2075 mm	<b>6'10"</b>
	Bucket Digging Force	5590 kg	<b>12,324 lb</b>	5590 kg	<b>12,324 lb</b>
	Arm Crowd Force	3810 kg	<b>8,400 lb</b>	3175 kg	<b>7,000 lb</b>
	Gradeability		<b>30°</b>		



# PC60-7B Compact Excavator

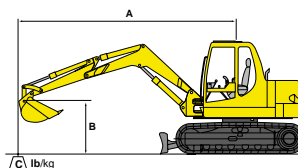
## Lifting Capacity



Capacity over front



Lateral capacity or capacity over 360°



A—Outreach starting from the rotation center

B—Height at bucket pin

C—Lifting capacity

**MONOBOOM™**  
WITH BLADE AT GROUND LEVEL

### Standard

A \ B		Max. Reach Front	Max. Reach Side	16'/5.0 m Front	16'/5.0 m Side	13'/4.0 m Front	13'/4.0 m Side	10'/3.0 m Front	10'/3.0 m Side	7'/2.0 m Front	7'/2.0 m Side
Arm length 5'5"/1650 mm with blade on ground											
20'/6.0 m	lbs./kg	3400/1550*	3400/1550*	—	—	—	—	—	—	—	—
15'/4.5 m	lbs./kg	3000/1350*	2600/1200	—	—	2900/1350*	2900/1350*	2900/1350*	2900/1350*	—	—
10'/3.0 m	lbs./kg	3000/1350*	1900/850	3000/1350*	2200/1000	3300/1500*	3200/1450	3900/1800*	3900/1800*	5300/2400*	5300/2400*
5'/1.5 m	lbs./kg	3000/1350*	1700/800	3300/1500*	2100/950	4100/1850*	3000/1350	5500/2500*	4700/2150	—	—
0'/0.0 m	lbs./kg	3100/1400*	1800/800	3500/1600*	2000/900	4500/2050*	2800/1300	6300/2850*	4400/2000	4600/2100*	4600/2100*
-5'/1.5 m	lbs./kg	3200/1450*	2100/950	—	—	4300/1950*	2800/1250	5900/2650*	4300/1950	8400/3800*	8400/3800*
-10'/3.0 m	lbs./kg	3000/1350*	3000/1350*	—	—	—	—	3800/1700*	3800/1700*	5500/2500*	5500/2500*

### Long Arm

A \ B		Max. Reach Front	Max. Reach Side	15'/4.6 m Front	15'/4.6 m Side	10'/3.0 m Front	10'/3.0 m Side	5'/1.5 m Front	5'/1.5 m Side
Arm length 7'5"/2260 mm with blade on ground									
15'/4.6 m	lbs./kg	2430/1100	1870/850	2310/1050	2310/1050	—	—	—	—
8'/2.4 m	lbs./kg	1760/800	1320/600	2760/1250	2310/1050	4080/1850	4080/1850	—	—
0'/0.0 m	lbs./kg	1760/800	1210/550	2540/1150	1980/900	5180/2350	3860/1750	—	—
-10'/3.0 m	lbs./kg	2870/1300	2200/1000	—	—	4740/2150	3860/1750	9040/4100	9040/4100

\* Load is limited by hydraulic capacity rather than tipping. Ratings are based on SAE Standard NO. J1097. Rated loads do not exceed 87% of hydraulic lift capacity or 75% of tipping load. Specifications are referring to the machine according to 89/392/EC directive configuration.

## Bucket & Arm Combinations

Bucket Width		SAE Heaped Capacity		Weight		Arm Selection			
						Standard		Long	
18"	460 mm	3.2 cu. ft.	.090 m³	330 lbs.	150 kg.	5'5" 1650 mm	X	7'4" 2260 mm	X
22"	560 mm	4.6 cu. ft.	.130 m³	355 lbs.	160 kg.		X		X
26"	660 mm	7.0 cu. ft.	.198 m³	406 lbs.	184 kg.		X		X
30"	760 mm	10.0 cu. ft.	.283 m³	467 lbs.	212 kg.		X		Δ
33"	840 mm	12.7 cu. ft.	.360 m³	485 lbs.	220 kg.		Δ		N/A

X general purpose use, weight up to 3040 lbs./cu. yd.  
Δ material weight up to 2,020 lbs. cu. yd.  
N/A not available

## Standard Equipment

- Air cleaner, dry type with dust indicator
- Cooling fan, suction type
- Heater and defroster
- Rearview mirror, RH & LH
- Seat, adjustable
- Seat belt 3"
- Travel alarm
- Travel levers & pedals
- Vandalism protection locks

## Optional Equipment

- Air conditioner
- Auxiliary hydraulic piping (1way ↔ 2way)
- Deceleration, one-touch
- Extend arm
- Greasing System, automatic
- Light, additional front working
- Offset Boom
- Pattern Change Valve (ISO ↔ SAE)
- Track Options:
  - 18" Triple Grouser Shoe
  - Road Liner
  - Rubber Track
- Track roller guard
- Tool kit
- Windshield washer

This specification sheet may contain attachments and optional equipment that are not available in your area. Please contact your local Komatsu Utility Corporation distributor for those items you may require. Materials and specifications are subject to change without notice.

KUSS106-03

© 2003 Komatsu Printed in USA

DK02(3M)PAL

02/03 (EV-1)

**KOMATSU®**

440 N. Fairway Drive  
PO Box 8112  
Vernon Hills, IL 60061-8112

website: [www.komatsuutility.com](http://www.komatsuutility.com)

